



Adlington St Paul's CE Primary School

Railway Road | Adlington | Chorley | PR69QZ

E | bursar@adlingtonstpauls.lancs.sch.uk

January 15th 2024

T | 01257 480276

W | www.adlingtonstpauls.lancs.sch.uk

Upcoming Events

Monday 15th January

Closing date for Reception 2024 Admissions

After school clubs begin

Wednesday 17th January

Y6 and Reception height and weight

Reception Balance Bikes session

Wednesday 24th January

Reception Balance Bikes session

Thursday 25th January

Author Susan Brownrigg visit

Y2 and Y6 Fire Safe Sessions

Tuesday 30th January

Y3 trip to Adlington Library with author Dan Worsley

Thursday 1st February

Y6 Police visit in school

'Whatever you do, work at it with all your heart'. Colossians 3

School Newsletter

Dear Parents and Carers,

What an incredible start to 2024! Year 4 smashed week 1 with 100% attendance and Reception and Year 2 had 99%.

As well as some incredible attendance, our children enjoyed completing their mini geography projects during the week to kick start their new Cornerstone topic themes which have all got a geographical focus for this term.

On Friday, you should have received a letter detailing information about your child's new topics, their knowledge organiser that supports their new topic key learning and a pick and mix sheet detailing projects that you can complete at home with your child to support their learning. If you feel that you have any skills or knowledge that can support any of our topics, we are always looking to enrich our curriculum and continue to build links within our school community so please do get in touch via the school office or your child's class teacher.

St. Paul's are now part of the Family Hub network. We are a safe space for our children and their families and are able to offer advice and support for our families. The Family Hub offers support for all stages of family life, from pregnancy through to 19 years old or 25 for those with special educational needs and disabilities (SEND). You will see this logo around school to show that we are part of this support network. Please ask if you would like more information or support.



Kind regards

Mrs J Burger

Attendance

Reception	99%
Year 1	93.8%
Year 2	98.7%
Year 3	91.7%
Year 4	100%
Year 5	99.1%
Year 6	92.9%
Whole School	96.4%

Lancashire Music Service

Did you know that you can sign your child up for Lancashire Music Service music lessons?

At the end of the autumn term, some of our children who access these lessons in school performed for our school to showcase their fantastic progress and achievements. Following this, some of our children have enquired about accessing these lessons in school.

For more information visit [Home - Lancashire Music Hub](https://www.lancashire.gov.uk/musicservice/) You can contact them on:

01257 234450

lancs.music@lancashire.gov.uk

These lessons can take place during school time, however, there will be an additional cost for these lessons which you will organise and pay for with Lancashire Music Service.



Adlington St Paul's CE Primary School

Railway Road | Adlington | Chorley | PR69QZ

E | bursar@adlingtonstpauls.lancs.sch.uk

January 15th 2024

T | 01257 480276

W | www.adlingtonstpauls.lancs.sch.uk

'Whatever you do, work at it with all your heart'. Colossians 3

ADLINGTON ST PAUL'S HOLIDAYS 2023-2024

Term		Holiday Dates
Autumn Term 2023	Inset Day	Monday 4th September 2023
	Term begins	Tuesday 5th September 2023
	Inset Day	Friday 20th October 2023
	Half term	Monday 23rd to Friday 27th October 2023
	Term Ends	Friday 22nd December 2023
Spring Term 2024	Inset Day	Monday 8th January 2024
	Term begins	Tuesday 9th January 2024
	Half term	Monday 19th to Friday 23rd February 2024
	Term ends	Thursday 28th March 2024
Summer Term 2024	Easter Holidays	Friday 29th March to Friday 5th April 2024
	Term begins	Monday 8th April 2024
	Bank holiday	Monday 6th May 2024
	Half term	Monday 27th May to Friday 7th June 2024
	Inset Day	Thursday 6th June 2024
	Inset Day	Friday 7th June 2024
	Term ends	Friday 19th July 2024

ADLINGTON ST PAUL'S HOLIDAYS 2024-2025

Term		Holiday Dates
Autumn Term 2024	Inset Day	Monday 2nd September 2024
	Term begins	Tuesday 3rd September 2024
	Half term	Monday 21st to Friday 25th October 2024
	Term Ends	Friday 20th December 2024
Spring Term 2025	Inset Day	Monday 6th January 2025
	Term begins	Tuesday 7th January 2025
	Half term	Monday 17th to Friday 21st February 2025
	Term ends	Friday 11th April 2025
Summer Term 2025	Easter Holidays	Monday 14th to Monday 21st April 2025
	Inset Day	Tuesday 22nd April 2025
	Term begins	Wednesday 23rd April 2025
	Bank holiday	Monday 5th May 2025
	Half term	Monday 26th May to Wednesday 4th June 2025
	Inset Day	Thursday 5th June 2025
	Inset Day	Friday 6th June 2025
	Term ends	Friday 18th July 2025

Attendance

At St. Paul's attendance is very important to us. We work together with our families to ensure that our children have the best possible education and experiences to enable them to flourish.

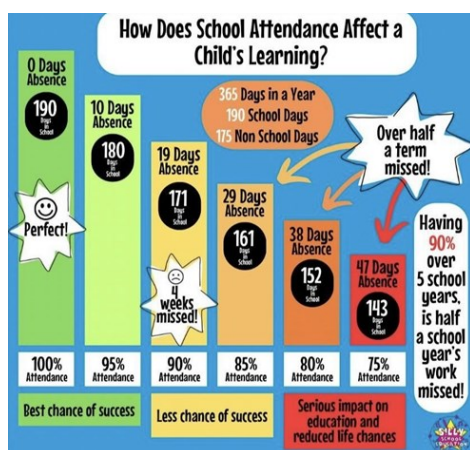
Our attendance policy and overview can be found on our website [Adlington St Paul's Church of England Primary School: Attendance](http://adlingtonstpauls.lancs.sch.uk) (adlingtonstpauls.lancs.sch.uk)

This week we are sharing some guidance from the NHS, which is to support parents and carers [Is my child too ill for school? - NHS \(www.nhs.uk\)](https://www.nhs.uk)

On 8th January, the government has launched a new campaign about the importance of attendance, 'Moments Matters, Attendance Counts.'

We are very grateful for your support with your child's attendance.

Our target is 97% for all.



The Year of Connecting and Flourishing

Last week, you received a letter from The Learning Together Trust about our new theme for 2024.

January sees us being Agents of Kindness. We have already seen a wide range of kindness during our first week back. Please share with us any acts of kindness that your child or your family take part in.

If you do not report that your child is absent

School will contact you via phone, if unable to reach you, they will contact the emergency contacts provided.

School may also send an email requesting you to contact the school office.

If we do not receive a response, your child will be marked as an unauthorised absence.

School may also carry out a home visit, in these circumstances this will be an unannounced visit.