



Adlington St Paul's CE Primary School

Railway Road | Adlington | Chorley | PR69QZ

E | bursar@adlingtonstpauls.lanes.sch.uk

April 22nd 2025

T | 01257 480276

W | www.adlingtonstpauls.lanes.sch.uk

Upcoming Events

Tuesday 22nd April

INSET—staff training

School Closed

Wednesday 23rd April

School reopens 845am

Thursday 24th April

Y3 swimming begins again

Monday 28th April

After School Clubs begin

Y6 Mock SAT's week

Wednesday 30th April

Netball Team Albany Academy

Monday 5th May

School Closed—May Bank Holiday

Tuesday 6th May

Islam Workshops

Thursday 8th May

Y4 Trust Watersports trip

Monday 12th May—Thursday 15th May

Y6 SAT's week

Monday 19th May

Y3 Ribchester Roman Museum Trip

Attendance

Reception	94%
Year 1	99%
Year 2	95%
Year 3	87%
Year 4	96%
Year 5	86%
Year 6	93%
Whole School	93%

'Whatever you do, work at it with all your heart'. Colossians 3

School Newsletter

Dear Parents and Carers,

Welcome back to the Summer Term! We trust you all have a lovely Easter break.

A warm welcome to our new reception children and their families, we look forward to you joining our St. Paul's family. If you have any questions about your child starting school in September 2025, please do not hesitate to get in touch at the school office.

After school clubs begin week beginning Monday 28th April, please note Y6 booster sessions will begin this first week back. Letters for after school clubs were sent home before Easter, if you did not receive one and are interested in signing your child up for a club, please contact the school office.

Please make sure your child's PE kit is returned to school. They will need trainers as some PE lessons will take place outside. Your child's full PE kit needs to be in school as they will not only be having PE lessons but will also be practicing for their Dance Festival during the summer term.

As we begin our summer term, please make sure your child comes to school each day with a water bottle, suitable coat for the weather and if necessary a suitable hat for the weather. We would recommend your child bringing a lightweight coat to school each day as our weather is often subject to change throughout the day and we always prioritise our children accessing our outdoors.

We have a lot of spare preloved uniform. If you are in need of any uniform during the summer term or looking ahead to the autumn term, please contact the school office with the sizes and uniform you are looking for so that we can check our supplies.

If there have been any changes during the Easter break or there is any significant information that you would like to pass onto school so that we can best support your child please do not hesitate to get in touch.

As always, we are here if you need any support or guidance, you only need to ask.

Thank you for your continued support, we look forward to an exciting and busy summer term that lies ahead.

Kind regards

Mrs Burger

Upcoming Dates

Mock SAT's week for Y6—week beginning Monday 28th April 2025

SAT's week Y6—week beginning Monday 12th May 2025

Y4 multiplication check—week beginning Monday 9th June 2025

Y1 phonics screening check—week beginning Monday 9th June 2025

If you have any questions about upcoming statutory assessments please contact your child's class teacher.



Adlington St Paul's CE Primary School

Railway Road | Adlington | Chorley | PR69QZ

E | bursar@adlingtonstpauls.lancs.sch.uk

April 22nd 2025

T | 01257 480276

W | www.adlingtonstpauls.lancs.sch.uk

'Whatever you do, work at it with all your heart'. Colossians 3

ADLINGTON ST PAUL'S HOLIDAYS 2024-2025

Term		Holiday Dates
Autumn Term 2024	Inset Day	Monday 2nd September 2024
	Term begins	Tuesday 3rd September 2024
	Half term	Monday 21st to Friday 25th October 2024
	Term Ends	Friday 20th December 2024
Spring Term 2025	Inset Day	Monday 6th January 2025
	Term begins	Tuesday 7th January 2025
	Half term	Monday 17th to Friday 21st February 2025
	Term ends	Friday 11th April 2025
Summer Term 2025	Easter Holidays	Monday 14th to Monday 21st April 2025
	Inset Day	Tuesday 22nd April 2025
	Term begins	Wednesday 23rd April 2025
	Bank holiday	Monday 5th May 2025
	Half term	Monday 26th May to Wednesday 4th June 2025
	Inset Day	Thursday 5th June 2025
	Inset Day	Friday 6th June 2025
	Term ends	Friday 18th July 2025

Adlington St. Paul's Holidays 2025-2026

Term		Holiday Dates
Autumn Term 2025	Inset Day	Monday 1st September 2025
	Term Begins	Tuesday 2nd September 2025
	Inset Day	Friday 24th October 2025
	Half Term	Monday 27th – Friday 31st October 2025
	Term Ends	Friday 19th December 2025
Spring Term 2026	Inset Day	Monday 5th January 2026
	Term Begins	Tuesday 6th January 2026
	Half Term	Monday 16th – Friday 20th February 2026
	Term Ends	Thursday 2nd April 2026
	Easter Holidays	Friday 3rd April – Friday 10th April 2026
Summer Term 2026	Term Begins	Monday 13th April 2026
	Bank Holiday	Monday 4th May 2026
	Half Term	Monday 25th May – Friday 5th June 2026
	Inset Days	Thursday 4th June Friday 5th June 2026
	Term Ends	Friday 17th July 2026

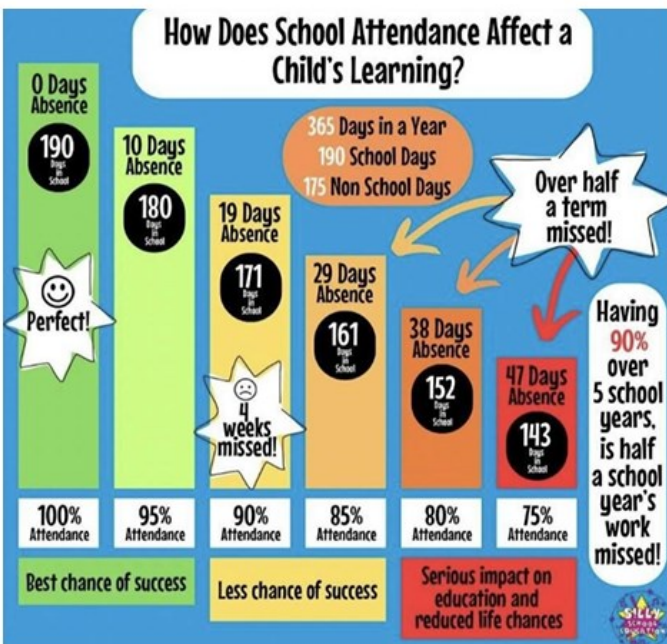


TUESDAY 24TH JUNE - ALL SAINTS & ST. PAUL'S
WEDNESDAY 25TH JUNE - ST. WILFRID'S
THURSDAY 26TH JUNE - CANON SHARPLES,
ST. DAVID'S & BENJAMIN HARGREAVES

ROBIN PARK SPORTS & TENNIS CENTRE, LOIRE DRIVE, WIGAN, WN5 0UL



How Does School Attendance Affect a Child's Learning?



If your child's attendance was below 90% at the end of the Spring term, it will be monitored closely. We are here to help, so if you are having difficulty with your child's attendance, we can provide support and advice.